

2018/2019

## HOUSE RIDER

### GENERAL

<b>LOAD IN</b>	Mainstage is on the first floor and can be reached by stairs or elevator (140x110x215cm Max. 630KG). Entrance is 90x205 cm wide
<b>TRAILER/BUS POWER</b>	230 V
<b>PARKING</b>	Paid parking (except sunday) until 6:00PM (€1,50 per hour/€7,50 per day), free parking after 6:00PM. Parking lot is right behind Het Podium (Schutsplein)
<b>BACKSTAGE FACILITIES:</b>	1x dressing/loungeroom, production office (unless agreed in advance with production manager), 2x shower, public restrooms. It is not allowed to smoke in Het Podium, smoking area is outside at the main entrance
<b>MERCHANDISE</b>	mainstage or theatercafe, on demand
<b>CATERING</b>	on demand

### MAIN STAGE

<b>MAX SOUNDLEVEL</b>	103 dBA at FOH
<b>STAGE</b>	6x4x1 meter (if needed bigger) + stairs
<b>RISER</b>	Max. 4x drumriser (2x1x0,5 meter)
<b>BACKDROP FLYBAR</b>	No
<b>BACKDROP BAR</b>	Yes

### THEATER CAFE

<b>MAX SOUNDLEVEL</b>	103 dBA
<b>STAGE</b>	Floorstage (no risers)
<b>RISER</b>	No
<b>BACKDROP FLYBAR</b>	No
<b>BACKDROP BAR</b>	No

### OTHER

<b>PROHIBITED</b>	Any kind of special effects (confetti, pyro, lasers, etc.) unless agreed in advance with production manager
<b>EARLY GET IN</b>	Early get in (before 4 hours prior to doors) is only possible when agreed in advance
<b>PHOTOGRAPHERS</b>	Het Podium has the right to use photos free of rights



2018/2019

## TECHNICAL RIDER

### MAIN STAGE

#### GENERAL

<b>CAPACITY</b>	220 persons
<b>MAX SOUNDLEVEL</b>	103 dBA
<b>STAGE</b>	6x4x1 meter (if needed bigger) + stairs
<b>POWER SUPPLY ex. PA</b>	Sound: 3x230V
<b>ex. own Lights:</b>	6x230V or 2x32A

#### PA/SPECS CONCERT HALL

-	Midas Verona 400
-	Stageblock 40/10 Ik150
-	2x stageblock 12 Ik37
-	Ev Netmax N8000 incl. laptop for concert hall
-	2x Ev CP2200
-	2x Ev TG5
-	4x Ev GRX 153/75
-	4x Ev x-line xsub

#### EFFECTS

<b>DELAY</b>	TC Electronic D-two multitap rhythm delay
<b>DUAL</b>	Lexicon MPX-100
<b>DYNAMIC PROCESSOR</b>	2x Klark Teknik Square One
<b>EQUALIZER</b>	2X Klark Teknik DN370 dual graphic EQ
<b>CD PLAYER</b>	Tascam CD-01U Pro

#### MONITORING

<b>SET 1</b>	<b>MONITOR</b>	4x DAS PF-015 series
	<b>EQUALIZER</b>	2x LA audio EQ231G
	<b>AMPLIFIER</b>	2x DAP audio CX-1500
<b>SET 2</b>	<b>MONITOR</b>	4x Acoustic line M5
	<b>EQUALIZER</b>	2x Ashly GQX-3102
	<b>AMPLIFIER</b>	2x Crown XTI4000
<b>EXTRA EQUIPMENT</b>		Behringer Xenyx502
		2x Behringer Eurolive B208

#### VIDEO

Optoma W303ST + HDMI connected to PA

#### MIC'S/DI'S/STANDS

##### MIC'S

3x	Shure SM58
1x	Behringer ultravoice XM8500

##### INSTRUMENT

2x	DAP CM10
2x	Behringer C-2
4x	Shure SM57

##### DRUM

4x	Sennheiser BF504
1x	Mic Audix D1
1x	Mic Audix D3
2x	Shure BG 6.1
1x	AKG D112
1x	Audio-technica ATM250

##### DI'S

1x	Behringer Ultra-DI Pro 8 channels
4x	DAP Audio ADI-200

##### STANDS

According to rider

### THEATER CAFE

#### PA

Behringer Eurorack UB1204 PRO
DAP Audio X-700
2x Behringer B215XL
Tascam CD-01U Pro

#### LIGHT

Showtec Lite-B 8Channel DMX
Showtec dimmer bar with 4x PAR 64

#### VIDEO

Optoma ES521 + VGA connected to PA

2018/2019

## LIGHTPLAN/BACKLINE

### MAIN STAGE

#### CONCERT HALL

<b>CONTROL</b>	Avolites Pearl Expert + Touchwing
<b>HALL LIGHTING</b>	4x Martin Mac 250 Krypton 12x CLF Tricolor RGB LED Par Discobol 50CM
<b>STAGE LIGHTING</b>	8x Martin Mac 250 Entour 8x Fargo LED RGB Zoom Spot 2x Stage Blinder 4 DMX 6x Showtec Performer 1000 LED
<b>EXTRA LIGHTING</b>	4x Robe Colorsport 250AT 2x Showtec Blacklight 50CM LED Martin JEM Compact Hazer Pro

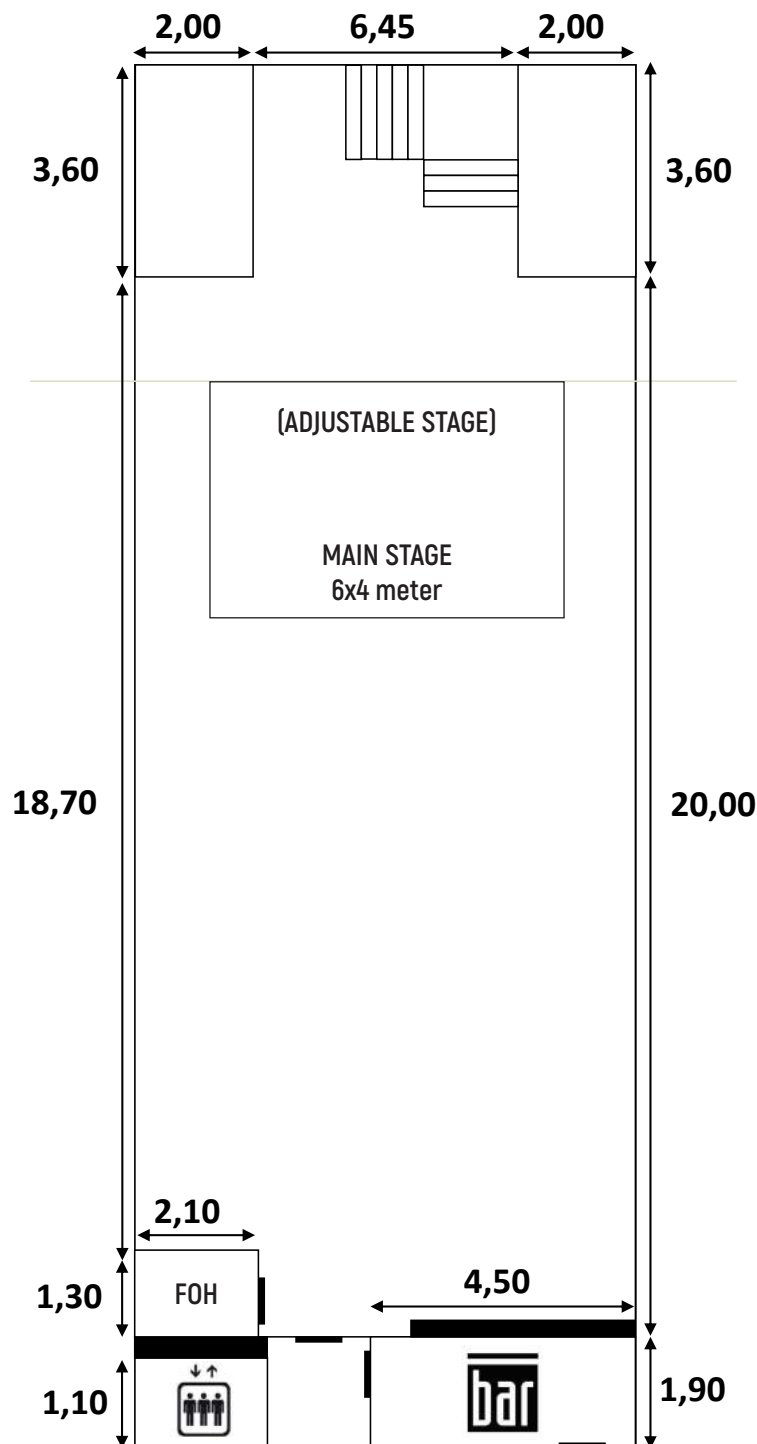
#### BACKLINE GEAR

<b>PEARL DRUMS</b>	Bassdrum Tom #1 Tom #2 Floortom 2x Snare (incl. stands/excl. pedals, symbals, seat)
<b>GUITAR</b>	2x 4x12 8 OHM Cabinet (London City/Costum) (excl. tops)
<b>BASS</b>	4x12 Harley Benton Cabinet Hartke LH500 top



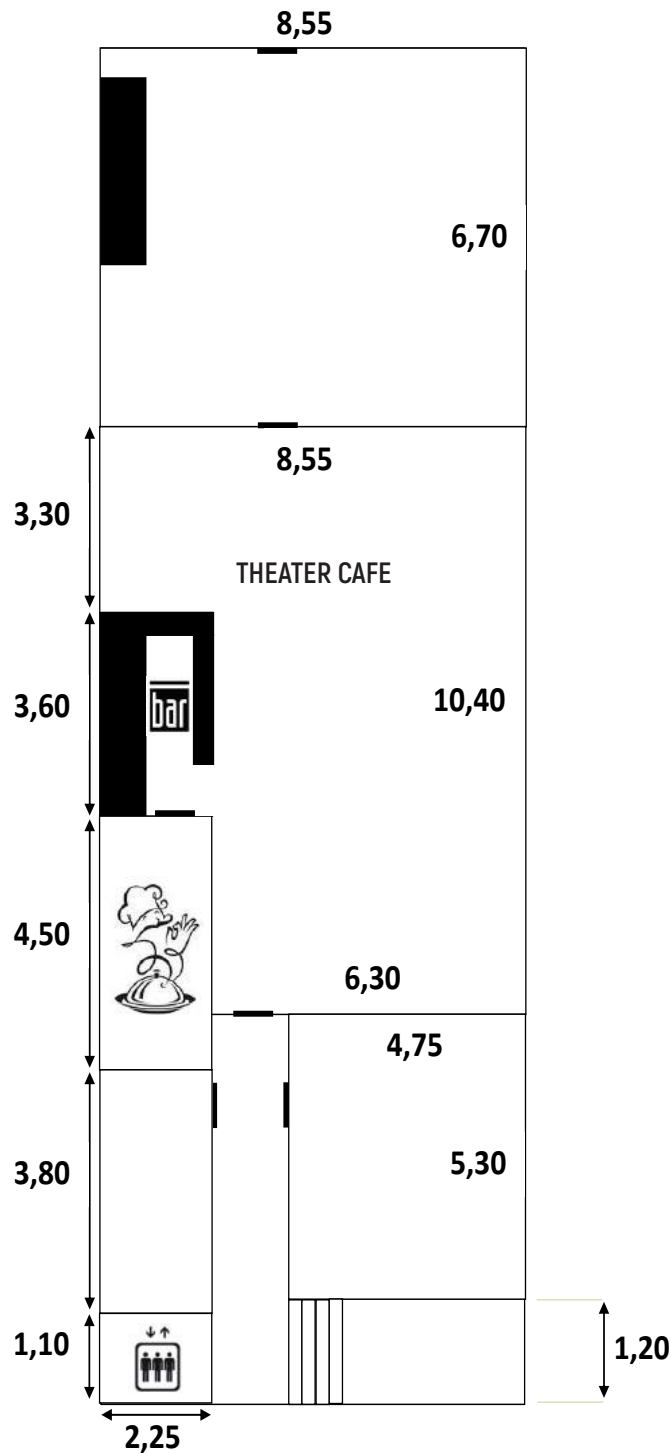
### MAIN STAGE

#### FIRST FLOOR



### THEATER CAFE

#### GROUND FLOOR



# REHEARSAL ROOMS

### BASEMENT

#### ROOM #1 INCLUDES SOUND SYSTEM

8 Channel Mixer  
2x Speaker + stands + speaker cables  
2x Mics + storageboxes + stands + mic clips  
+ XLR-cables

**BASS AMPLIFIER** Hartke LH500 top + Harley Benton cabinet

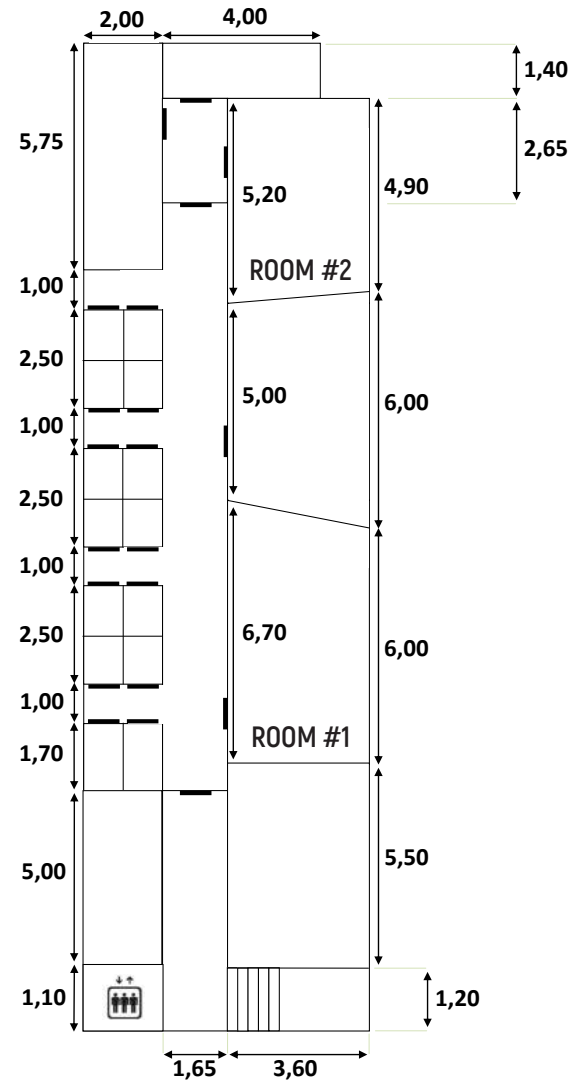
**2x GUITAR AMPLIFIER** Orange Crush Pro 120 +  
Harley Benton cabinet

**DRUMKIT** Pearl: Bassdrum, 2x Tom, Floortom, Snare  
Sabian: Crash slymbal, Ride slymbal, Hi-hat  
All includes stands, pedals, felts, clutch, bolts

#### ROOM #2 INCLUDES SOUND SYSTEM

8 Channel Mixer  
2x Speaker + stands + speaker cables  
2x Mics + storageboxes + stands + mic clips  
+ XLR-cables

**INFO & BOOKING** [WWW.HETPODIUM.NL/OEFENRUIMTES](http://WWW.HETPODIUM.NL/OEFENRUIMTES)



REHEARSAL ROOM #1